



3352 L & N DRIVE FOR LEASE



DESCRIPTION: OFFICE FOR LEASE WITH 133' OF ROAD FRONTAGE. HIGH VISIBILITY AND HEAVY DAILY TRAFFIC COUNT. STREET SIGNAGE AVAILABLE.

LOCATION: FROM THE PARKWAY, EAST ON DRAKE AVE. RIGHT ON L & N DR. GO APPROX. .8 MILES. PROPERTY ON THE RIGHT, BEHIND GIBSON'S BARBEQUE.

BUILDING SIZE: 4,232 SQ. FT. (+/-)

AVAILABLE SPACE: 3,230 SQ. FT. (+/-)

PARKING: 16 SPACES

LEASE PRICE: \$3,400/ MONTH/ NN

FLOOR PLAN: SEE REVERSE FOR FLOOR PLAN

TRAFFIC COUNT: 5,000 VEHICLES PER DAY

CONTACT: RUSS RUSSELL, CCIM, ALC, CEA ♦ 256-536-7777

**FOR OUR MOST UP TO DATE PROPERTY INFORMATION PLEASE VISIT
RUSSRUSSELL.COM.**

This property is subject to prior sale or removal from the market without notice. All information shown in this brochure, while based upon information supplied by the owners and from other sources deemed reliable, is not, in any way, warranted by Russ Russell Commercial Real Estate.



Ranger Russell
Madison County's *First*
Named Real Estate Drone



Huntsville's First CCIM



Huntsville's First ALC



Huntsville's First CEA

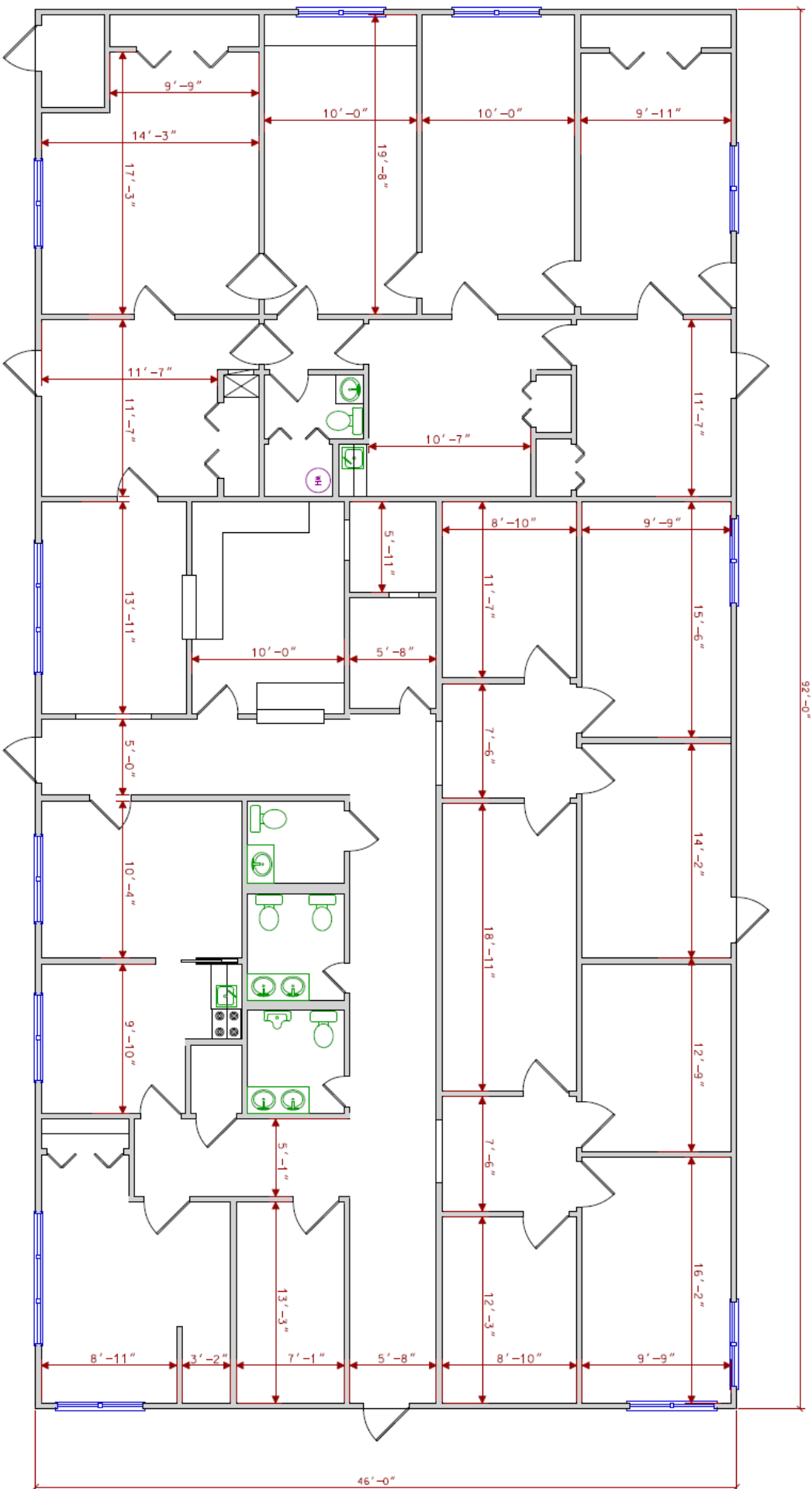


Ruff Russell
America's *First and ONLY*
Real Estate Mascot

923-C Merchants Walk • Huntsville, AL 35801 • (256) 536-7777

Fax: (256) 536-7710 • Website: russrussell.com

3352 L & N DRIVE



3352 L & N DRIVE
4,232 SF