



## S. MEMORIAL PARKWAY/GREEN COVE ROAD PROPERTY BRIEF



**DESCRIPTION:** MIXED USE COMMERCIAL AND RESIDENTIAL DEVELOPMENT LAND. **ADDITIONAL 59 ACRES+/- TO THE EAST OF THIS PROPERTY ALSO AVAILABLE FOR SALE AT \$15.00/SQ.FT. SEE ON REVERSE SIDE.**

**LOCATION:** N.E. CORNER OF S. MEMORIAL PARKWAY & GREEN COVE ROAD.

**LAND SIZE:** 51.28 ACRES +/- ALL OR PART

**SURVEY:** ON REVERSE SIDE

**ZONING:** LIGHT INDUSTRY

**TRAFFIC COUNT:** MEMORIAL PARKWAY- 87,150 VEHICLES PER DAY  
GREEN COVE ROAD- 2,020 VEHICLES PER DAY

**SALE PRICE:** 51.28 ACRES+/-: \$6,900,000  
59 ACRES+/-: \$15.00/ SQ.FT.

**CONTACT:** RUSS RUSSELL CCIM, ALC, CEA ♦ 256-536-7777  
**FOR OUR MOST UP TO DATE PROPERTY INFORMATION PLEASE VISIT**  
**[WWW.RUSSRUSSELL.COM](http://WWW.RUSSRUSSELL.COM)**

This property is subject to prior sale or removal from the market without notice. All information shown in this brochure, while based upon information supplied by the owners and from other sources deemed reliable, is not, in any way, warranted by Russ Russell Commercial Real Estate.



**Ranger Russell**  
Madison County's **First**  
**Named** Real Estate Drone



Huntsville's First CCIM



Huntsville's First ALC



Huntsville's First CEA



**Ruff Russell**  
America's **First and ONLY**  
Real Estate Mascot

923-C Merchants Walk • Huntsville, AL 35801 • (256) 536-7777

Fax: (256) 536-7710 • Website: russrussell.com

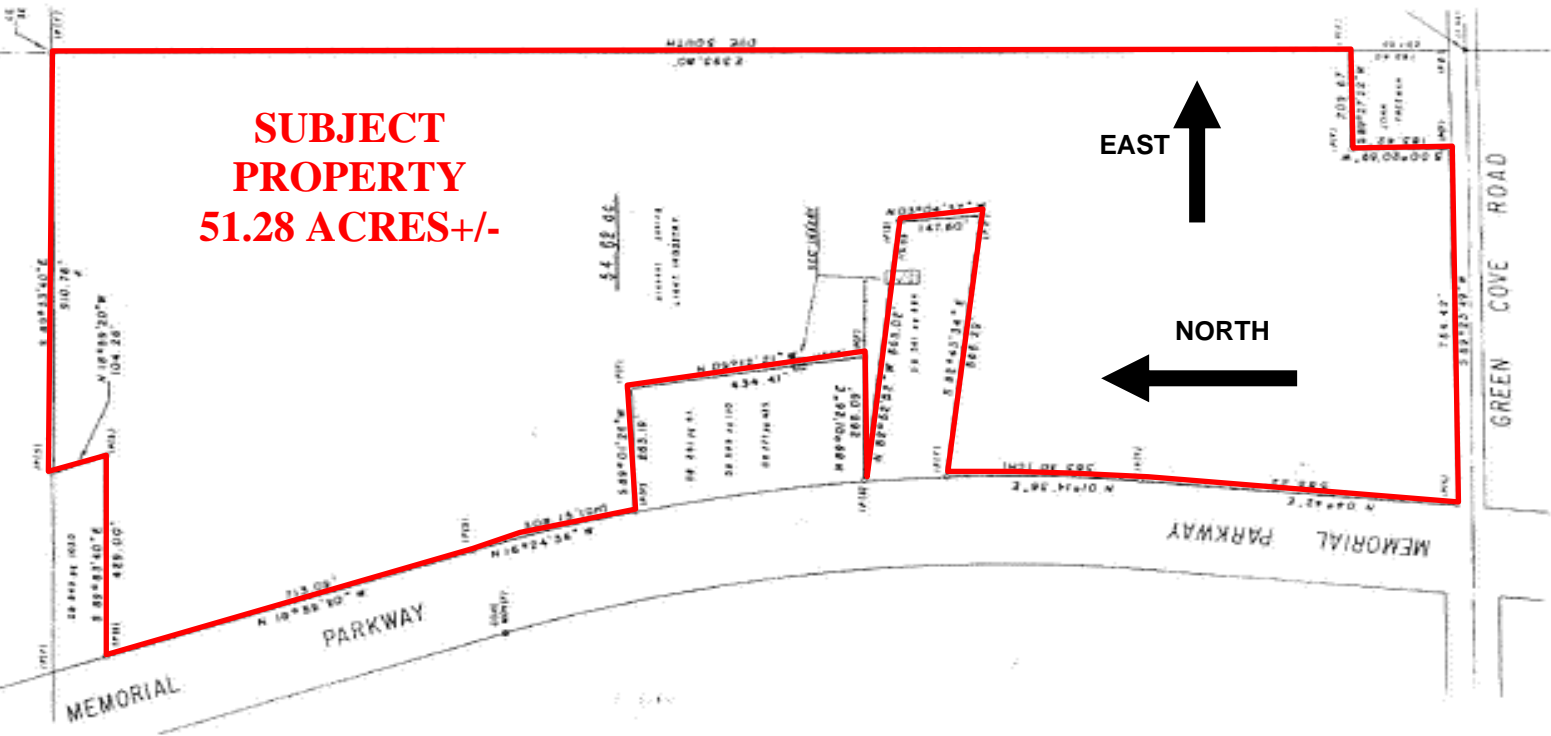


# S. MEMORIAL PARKWAY/ GREEN COVE ROAD

**SUBJECT  
PROPERTY  
51.28 ACRES+/-**

**EAST**

**NORTH**



**SUBJECT  
PROPERTY  
51.28 ACRES +/-**

**ALSO  
AVAILABLE  
59 ACRES +/-**

