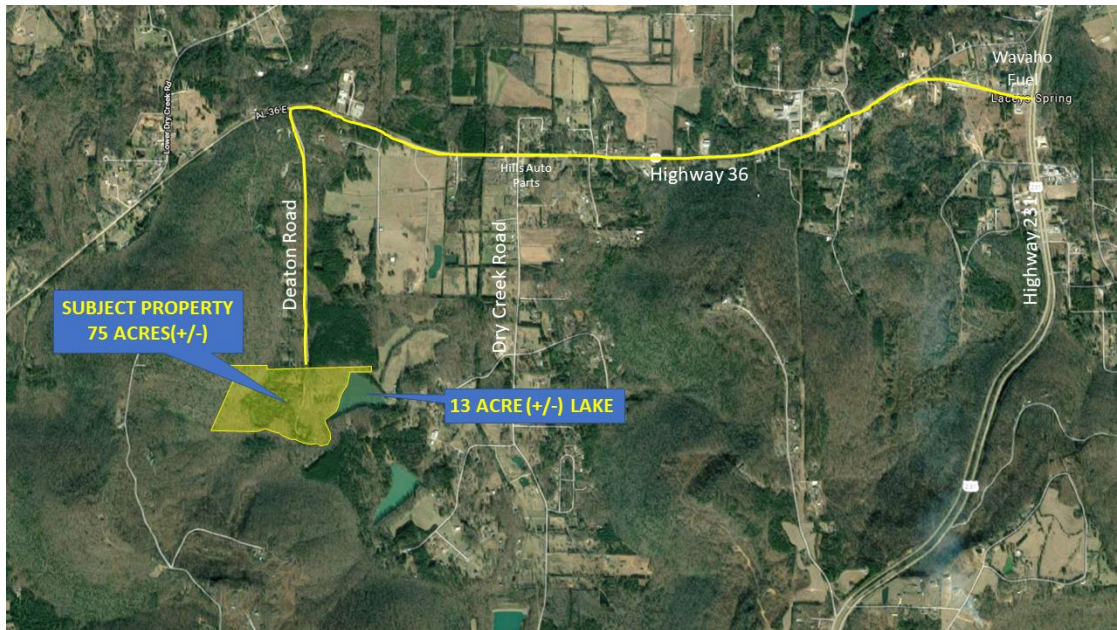




HIGHWAY 36/ DEATON ROAD LACEY'S SPRING, ALABAMA LAND



DESCRIPTION: 71.76 ACRES OF BEAUTIFUL & SECLUDED PRIVATE LAND WITH A LAKE VIEW. PROPERTY INCLUDES 1/3 INTEREST IN THE 11.56 ACRE (+/-) LAKE WHICH IS STOCKED WITH FISH.

LOCATION: FROM HUNTSVILLE GO SOUTH ON HIGHWAY 231. TURN LEFT ON HIGHWAY 36 AND GO APPROX. 2.7 MILES TO DEATON ROAD. TURN LEFT ON DEATON AND GO TO THE END OF THE ROAD.

LAND SIZE: 71.76 ACRES (+/-)

ZONING: COUNTY

SURVEY: ON REVERSE SIDE.

SALE PRICE: \$1,080,000

CONTACT: RUSS RUSSELL, CCIM, ALC, CEA ♦ 256-536-7777

FOR OUR MOST UP TO DATE PROPERTY INFORMATION PLEASE VISIT
www.russrussell.com

This property is subject to prior sale or removal from the market without notice. All information shown in this brochure, while based upon information supplied by the owners and from other sources deemed reliable, is not, in any way, warranted by Russ Russell Commercial Real Estate.



Ranger Russell
Madison County's *First*
Named Real Estate Drone



Huntsville's First CCIM



Huntsville's First ALC



Huntsville's First CEA

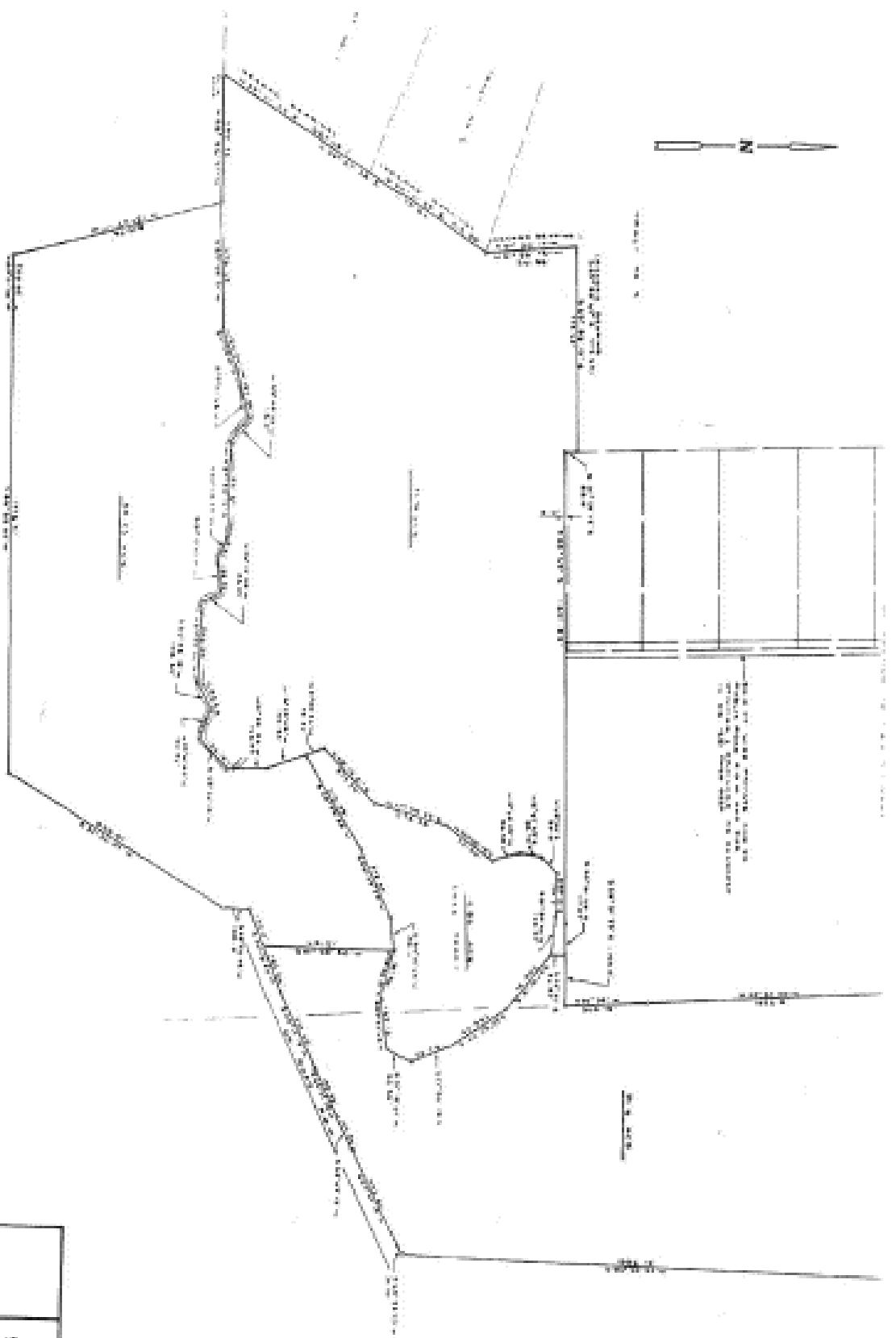


Ruff Russell
America's *First and ONLY*
Real Estate Mascot

923-C Merchants Walk • Huntsville, AL 35801 • (256) 536-7777

Fax: (256) 536-7710 • Website: russrussell.com

HWY 36 / DEATON ROAD



PLAT FOR			
CHARLES SMITH			
SECTIONS 15, 16, 17 T2S, R1W, M2S			
MORGAN COUNTY, ALABAMA			
G. W. JONES & SONS, INC.			
COUNTY CLERK			
RECORDED			
INDEXED			
FILED			