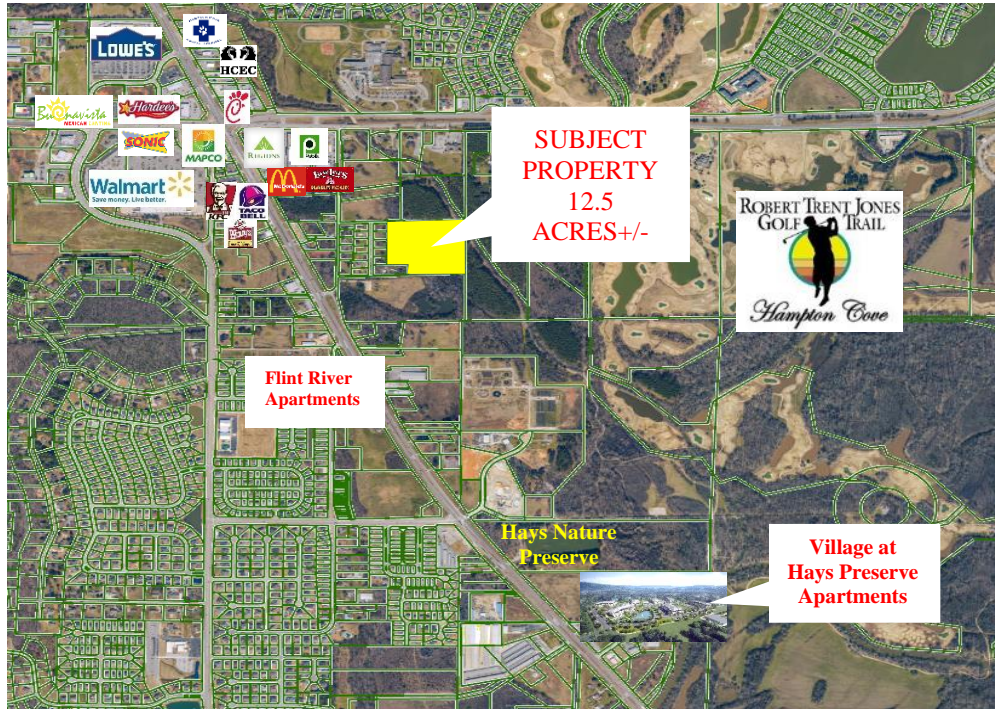




HAMPTON COVE LAND PROPERTY BRIEF



DESCRIPTION: VERY UNIQUE DEVELOPMENT LAND BORDERING WATER. POTENTIAL FOR MORE LAND THAT COULD GO TO HIGHWAY 431 SOUTH. CALL FOR DETAILS.

LOCATION: JUST S.E. AND BEHIND PUBLIX IN HAMPTON COVE.

LAND SIZE: 12.5 ACRES (+/-)

SURVEY: SEE REVERSE SIDE

ZONING: COUNTY

SALE PRICE: \$1,200,000

CONTACT: RUSS RUSSELL, CCIM, ALC, CEA ♦ 256-536-7777

FOR OUR MOST UP TO DATE PROPERTY INFORMATION PLEASE VISIT
RUSSRUSSELL.COM.

This property is subject to prior sale or removal from the market without notice. All information shown in this brochure, while based upon information supplied by the owners and from other sources deemed reliable, is not, in any way, warranted by Russ Russell Commercial Real Estate.



Ranger Russell
Madison County's *First*
Named Real Estate Drone



Huntsville's First CCIM



Huntsville's First ALC



Huntsville's First CEA



Ruff Russell
America's *First and ONLY*
Real Estate Mascot

923-C Merchants Walk • Huntsville, AL 35801 • (256) 536-7777

Fax: (256) 536-7710 • Website: russrussell.com

HAMPTON COVE LAND

