



COMMERCIAL REAL ESTATE

## 500 WHITESPORT DRIVE UNIT #4



**DESCRIPTION:** RARE 2-STORY END-UNIT MEDICAL CONDO WITH HIGH VISIBILITY ON THE CRESTWOOD MEDICAL CAMPUS.

**LOCATION:** S. MEMORIAL PARKWAY, EAST ON AIRPORT ROAD. LEFT ON CHATEAU DRIVE. RIGHT ON WHITESPORT DRIVE. PROPERTY ON THE CORNER OF HOSPITAL DRIVE & WHITESPORT DRIVE.

**AVAILABLE SUITE:** UNIT #4: 2,850 SQ. FT. (+/-)

**PARKING:** AMPLE

**ZONING:** MEDICAL DISTRICT 2

**FLOORPLAN:** SEE REVERSE SIDE.

**VIDEO TOUR:** GO TO [https://youtu.be/56\\_EAAnVt2o](https://youtu.be/56_EAAnVt2o) FOR A VIDEO TOUR.

**SALE PRICE:** \$550,000

**LEASE PRICE:** \$18/ SQ. FT. NNN

**CONTACT:** RUSSELL RUSSELL, CCIM, ALC, CEA ♦ 256-536-7777

FOR OUR MOST UP TO DATE PROPERTY INFORMATION PLEASE VISIT [RUSSRUSSELL.COM](http://RUSSRUSSELL.COM)

This property is subject to prior sale or removal from the market without notice. All information shown in this brochure, while based upon information supplied by the owners and from other sources deemed reliable, is not, in any way, warranted by Russ Russell Commercial Real Estate.



**Ranger Russell**  
Madison County's *First*  
Named Real Estate Drone



Huntsville's First CCIM



Huntsville's First ALC



Huntsville's First CEA



**Ruff Russell**  
America's *First and ONLY*  
Real Estate Mascot

923-C Merchants Walk • Huntsville, AL 35801 • (256) 536-7777

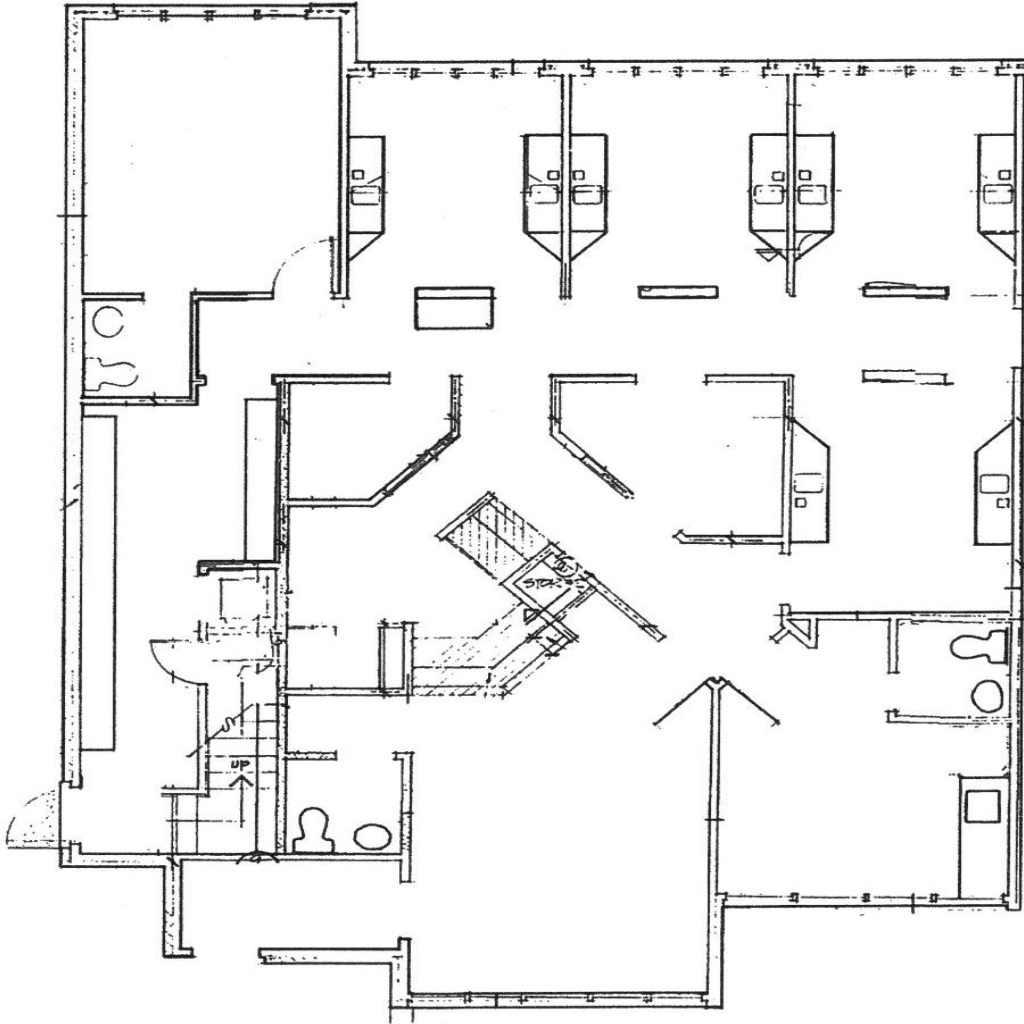
Fax: (256) 536-7710 • Website: [russrussell.com](http://russrussell.com)

# 500 WHITESPORT DRIVE

## Floor Plan

### 1ST FLOOR PLAN

Approx. 1,950 SF



### 2ND FLOOR PLAN

Approx. 900 SF

\*Currently built out.

