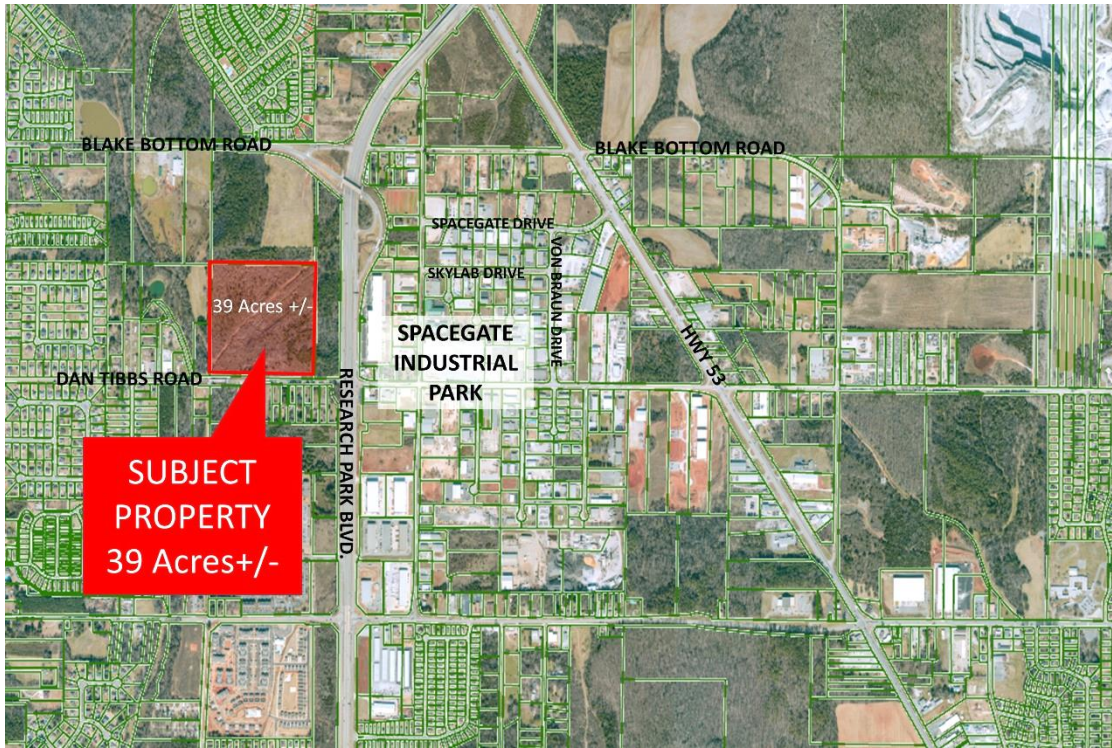




DAN TIBBS ROAD LAND



- DESCRIPTION:** PRIME DEVELOPMENT LAND FOR INDUSTRIAL OR RESIDENTIAL USE.
- LOCATION:** 1 BLOCK WEST OF SPACEGATE INDUSTRIAL PARK AND RESEARCH PARK BLVD. ON DAN TIBBS ROAD.
- LAND SIZE:** 39 ACRES+/-
- ZONING:** COUNTY, **OPPORTUNITY ZONE**
- TRAFFIC COUNT:** 20,960+/- VEHICLES PER DAY
- SALE PRICE:** \$185,000/ACRE
- CONTACT:** RUSS RUSSELL, CCIM, ALC, CEA ♦ 256-536-7777

FOR OUR MOST UP TO DATE PROPERTY INFORMATION PLEASE VISIT www.russrussell.com.

This property is subject to prior sale or removal from the market without notice. All information shown in this brochure, while based upon information supplied by the owners and from other sources deemed reliable, is not, in any way, warranted by Russ Russell Commercial Real Estate.



Ranger Russell
Madison County's *First Named* Real Estate Drone



Huntsville's First CCIM



Huntsville's First ALC



Huntsville's First CEA



Ruff Russell
America's *First and ONLY* Real Estate Mascot