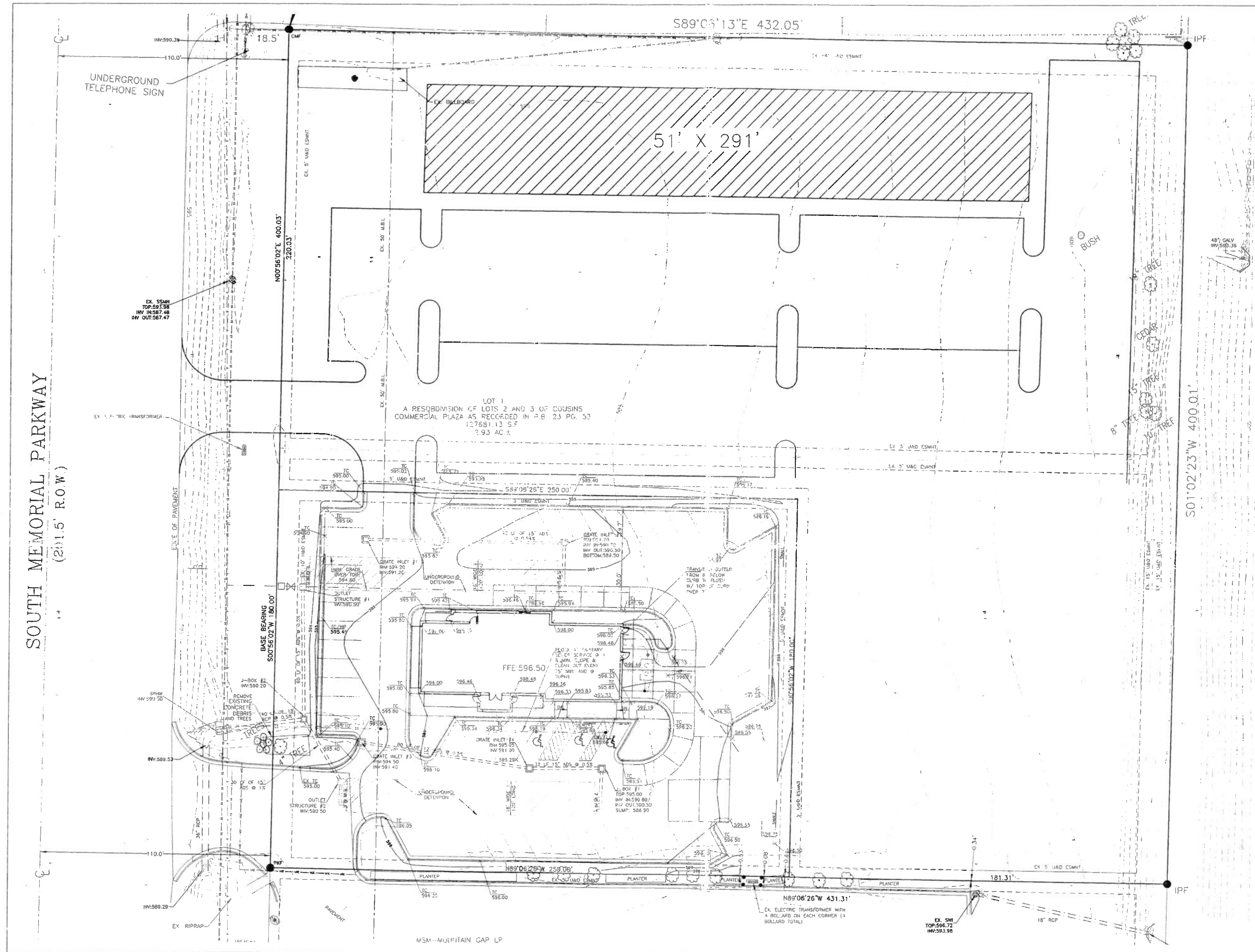


SOUTH MEMORIAL PARKWAY  
(2011.5' R.O.W.)



LOT 1  
A RESUBDIVISION OF LOTS 2 AND 3 OF COUSINS  
COMMERCIAL PLAZA AS RECORDED IN P.B. 23 PG. 53  
127681.13 S.F.  
2.93 AC ±

HUNTSVILLE RAILROAD AUTHORITY  
MADISON COUNTY TRACKS  
(100' R.O.W.)

**GOODWYN, MILLS & CAWOOD, Inc.**  
ENGINEERING  
ARCHITECTURE  
LANDSCAPE ARCHITECTURE  
SURVEYING  
PLANNING

7 Lowry Drive  
Suwanee, GA 30086  
Phone: 770-539-3471  
Fax: 770-539-3473

MONTESSERY SPRINGHAM - MOBILE  
ANDALUSIA - VERNON - EUFALIA - PRESTON  
FL. GREENVILLE, SC. HIGHVILLE, TN.

XXXXXXXXXX  
XXXXXXXXXX  
PREPARED FOR:  
XXXXXXXXXX

PROJECT NUMBER:  
**HXXXXX**

ISSUE	DATE
SLOT1	SLT 1-0T
SLOT2	SLT 2-0T
SLOT3	SLT 3-0T
SLOT4	SLT 4-0T

DRAWN BY: XXXX

CHECKED BY: XXXX

SCALE: 1/2" = 1'-0"  
20' 0' 20'

**C1**

SHEET 1 OF 1