



COMMERCIAL REAL ESTATE

WAREHOUSE FOR SALE

**2652 Jordan Lane
Huntsville, Alabama 35816**

Are you in the market for a spacious warehouse building in a prime location? Look no further than this 19,032 square foot property currently being used as a furniture store. Located in a high traffic area, this building is perfect for any business looking to attract customers and increase visibility. But that's not all - this property also includes six additional out-buildings, providing even more space for storage or potential expansion. The main warehouse boasts a large open area, perfect for displaying products or setting up workstations. It also features two private offices and a kitchenette, making it a versatile space for any type of business. The possibilities are endless with this property.



SALE

PURCHASE PRICE:
\$1,900,000.00

*Land Size: 1.64 Acres
Property Size: 19,032 Sq. Ft.
Year Built: 1987*

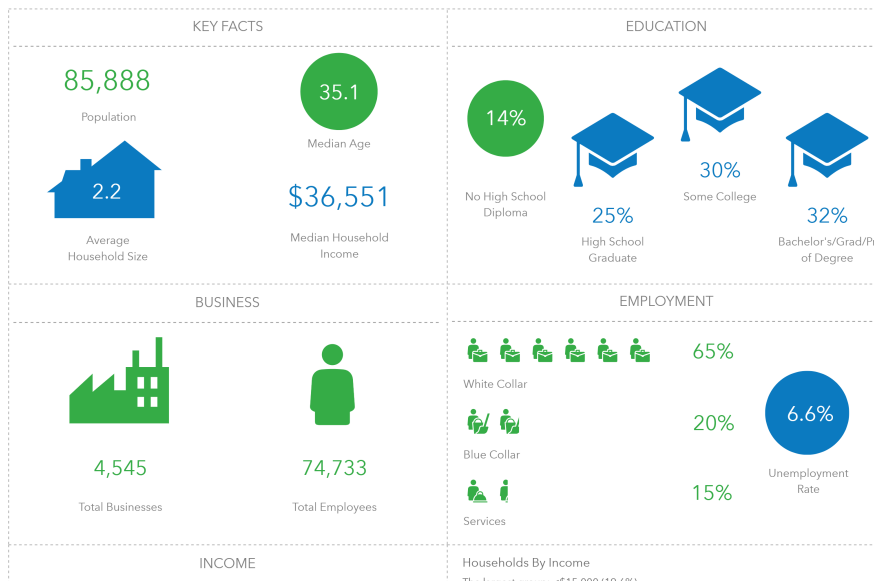
Contact:
256-536-7777

RUSS RUSSELL
CCIM
russ@russrussell.com



Property Available

256-536-7777



This information has been obtained from sources believed reliable. We have not verified it and make no guarantee, warranty or representation about it. Any projections, opinions, assumptions or estimates used are for example only and do not represent the current or future performance of the property. You and your advisors should conduct a careful, independent investigation of the property to determine to your satisfaction the suitability of the property for your needs. Photos herein are the property of their respective owners and use of these images without the express written consent of the owner is prohibited.