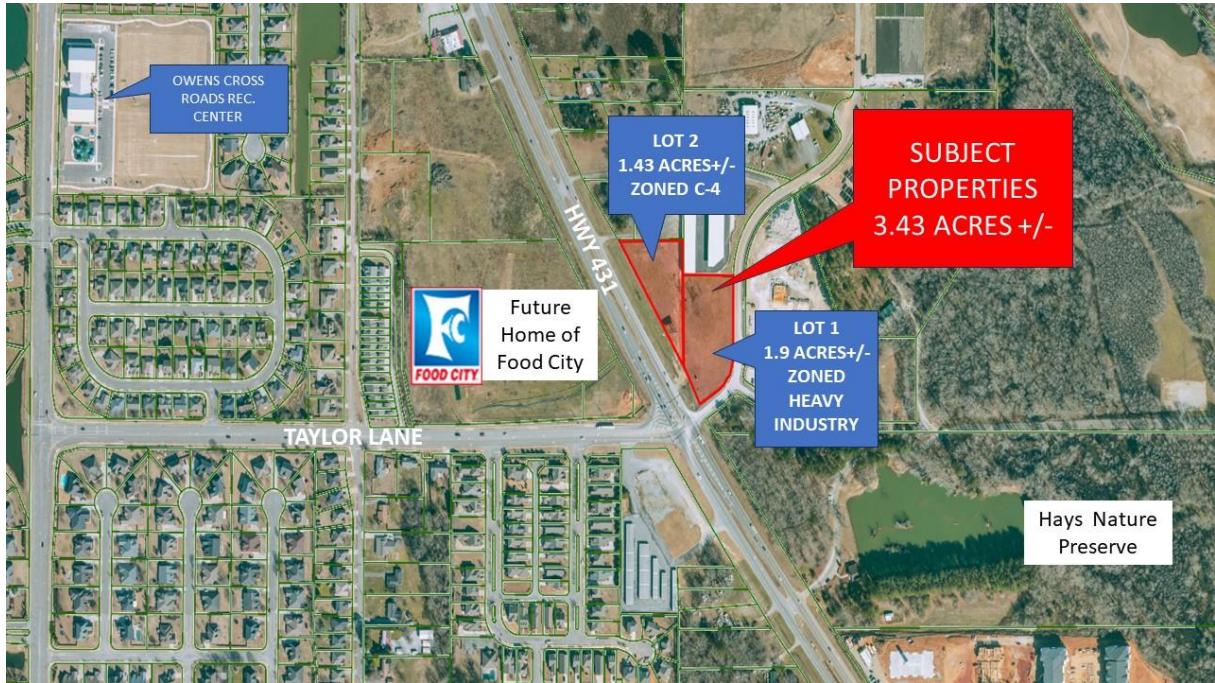




COMMERCIAL REAL ESTATE

HWY. 431 SOUTH & ROUND BAR DRIVE LAND



DESCRIPTION: EXCELLENT COMMERCIAL LAND FOR SALE IN A FAST-GROWING AREA.
LOCATION: FROM HAMPTON COVE BYPASS, GO 1.1 MILES TO ROUND BAR DRIVE.
LAND SIZE(S): LOT ON THE N.E. CORNER OF HWY 431 S. AND ROUND BAR DRIVE.
ZONING: LOT 1: 1.9 ACRES +/- ZONED HEAVY INDUSTRY
 LOT 2: 1.43 ACRES +/- ZONED C-4
SURVEY: HEAVY INDUSTRY, C4
TRAFFIC COUNT: ON REVERSE SIDE.
SALE PRICE: 22,142 +/- VEHICLES PER DAY
 \$1,750,000

CONTACT: RUSS RUSSELL, CCIM, ALC, CEA ♦ 256-536-7777

FOR OUR MOST UP TO DATE PROPERTY INFORMATION PLEASE VISIT RUSSRUSSELL.COM

This property is subject to prior sale or removal from the market without notice. All information shown in this brochure, while based upon information supplied by the owners and from other sources deemed reliable, is not, in any way, warranted by Russ Russell Commercial Real Estate.



923-C Merchants Walk • Huntsville, AL 35801 • (256) 536-7777

Fax: (256) 536-7710 • Website: russrussell.com

