



COMMERCIAL REAL ESTATE

# 333 WHITESPORT DRIVE #304 MEDICAL OFFICE



- DESCRIPTION:** 3<sup>RD</sup> FLOOR MEDICAL OFFICE WITH HIGH VISIBILITY ON THE CRESTWOOD MEDICAL CAMPUS.
- LOCATION:** S. MEMORIAL PARKWAY, EAST ON AIRPORT ROAD. LEFT ON CHATEAU DRIVE. RIGHT ON WHITESPORT DRIVE. PROPERTY ON THE LEFT JUST PAST HOSPITAL DRIVE.
- AVAILABLE SUITE:** UNIT #304: 1,938 SQ. FT. +/-
- FLOOR PLAN:** ON REVERSE SIDE
- PARKING:** AMPLE
- ZONING:** MEDICAL DISTRICT 2
- VIDEO TOUR:** GO TO <https://tinyurl.com/28spn7r4> FOR A VIDEO TOUR.
- SALE PRICE:** \$395,000
- LEASE PRICE:** \$17.50/ SQ. FT. NNN + \$1,291/YR. FOR CONDO DUES & UTILITIES
- CONTACT:** RUSSELL, CCIM, ALC, CEA ♦ 256-536-7777

FOR OUR MOST UP TO DATE PROPERTY INFORMATION PLEASE VISIT  
[RUSSRUSSELL.COM](http://RUSSRUSSELL.COM)

This property is subject to prior sale or removal from the market without notice. All information shown in this brochure, while based upon information supplied by the owners and from other sources deemed reliable, is not, in any way, warranted by Russ Russell Commercial Real Estate.



**Ranger Russell**  
Madison County's *First*  
Named Real Estate Drone



Huntsville's First CCIM



Huntsville's First ALC



Huntsville's First CEA

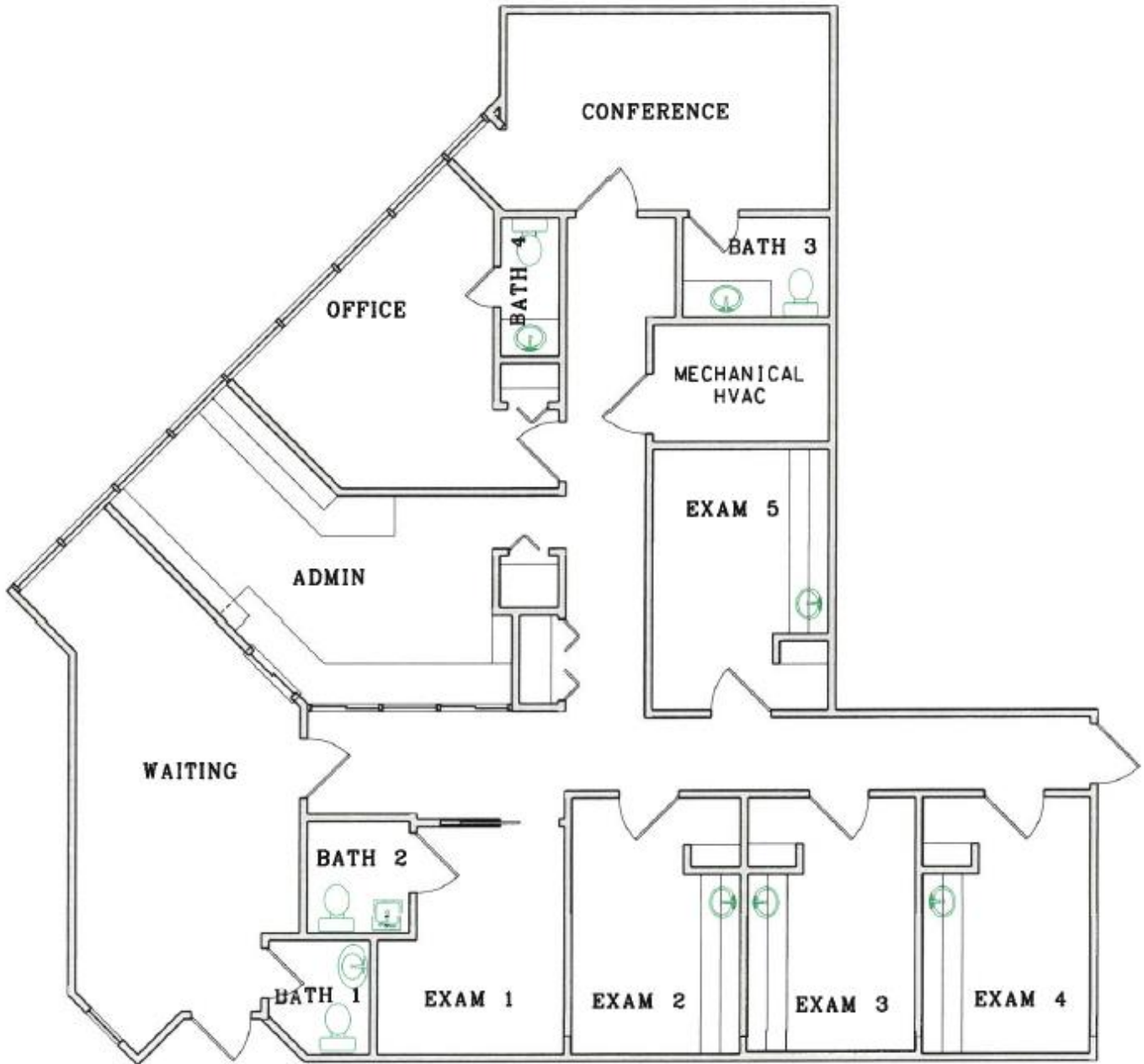


**Ruff Russell**  
America's *First and ONLY*  
Real Estate Mascot

923-C Merchants Walk • Huntsville, AL 35801 • (256) 536-7777

Fax: (256) 536-7710 • Website: [russrussell.com](http://russrussell.com)

# 333 WHITESPORT DRIVE SUITE 304 FLOORPLAN



333 WHITESPORT DRIVE  
SUITE 304