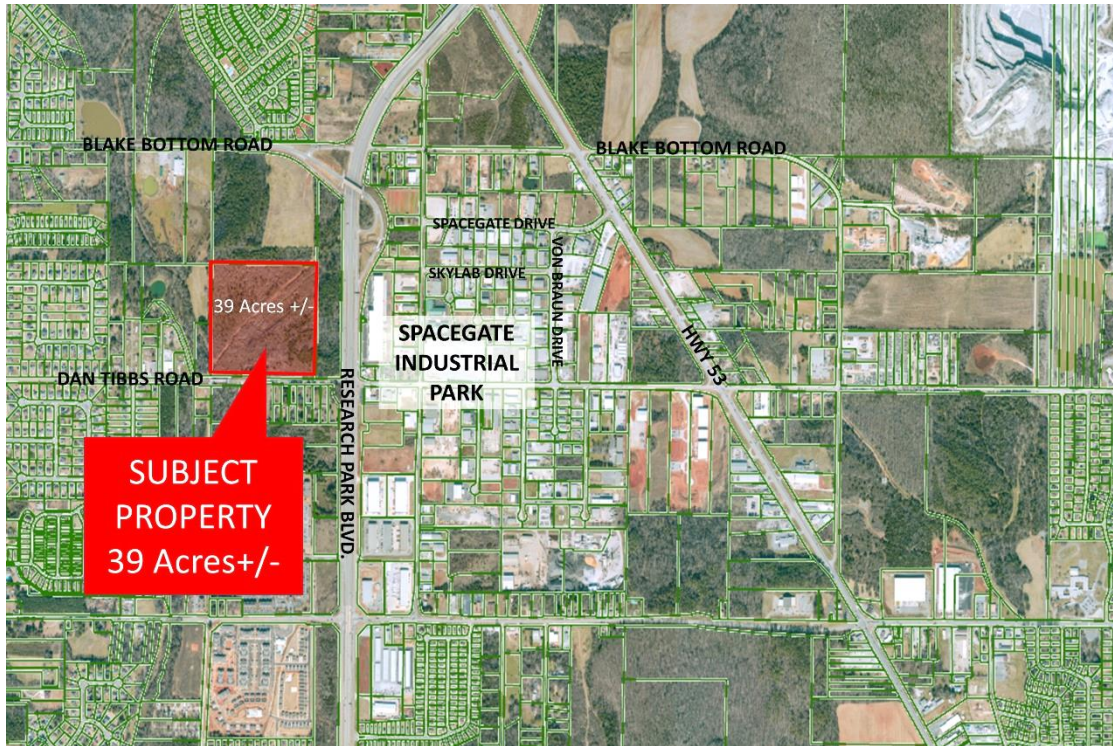




DAN TIBBS ROAD LAND



DESCRIPTION:	PRIME DEVELOPMENT LAND FOR INDUSTRIAL OR RESIDENTIAL USE.
LOCATION:	1 BLOCK WEST OF SPACEGATE INDUSTRIAL PARK AND RESEARCH PARK BLVD. ON DAN TIBBS ROAD.
LAND SIZE:	39 ACRES+/-
SURVEY:	ON REVERSE SIDE
ZONING:	COUNTY, OPPORTUNITY ZONE
TRAFFIC COUNT:	20,960+/- VEHICLES PER DAY
SALE PRICE:	\$175,000/ ACRE
CONTACT:	RUSS RUSSELL, CCIM, ALC, CEA ♦ 256-536-7777

**FOR OUR MOST UP TO DATE PROPERTY INFORMATION PLEASE VISIT
www.russrussell.com.**

This property is subject to prior sale or removal from the market without notice. All information shown in this brochure, while based upon information supplied by the owners and from other sources deemed reliable, is not, in any way, warranted by Russ Russell Commercial Real Estate.



Ranger Russell
Madison County's **First**
Named Real Estate Drone



Huntsville's First CCIM



Huntsville's First ALC



Huntsville's First CEA



Ruff Russell
America's **First and ONLY**
Real Estate Mascot

923-C Merchants Walk • Huntsville, AL 35801 • (256) 536-7777

Fax: (256) 536-7710 • Website: russrussell.com

[illegible]**LATIFI'S 39.40 ACRES**

JOURNAL OF THE INTERNATIONAL ASSOCIATION OF AGRICULTURAL ECONOMISTS

[illegible]