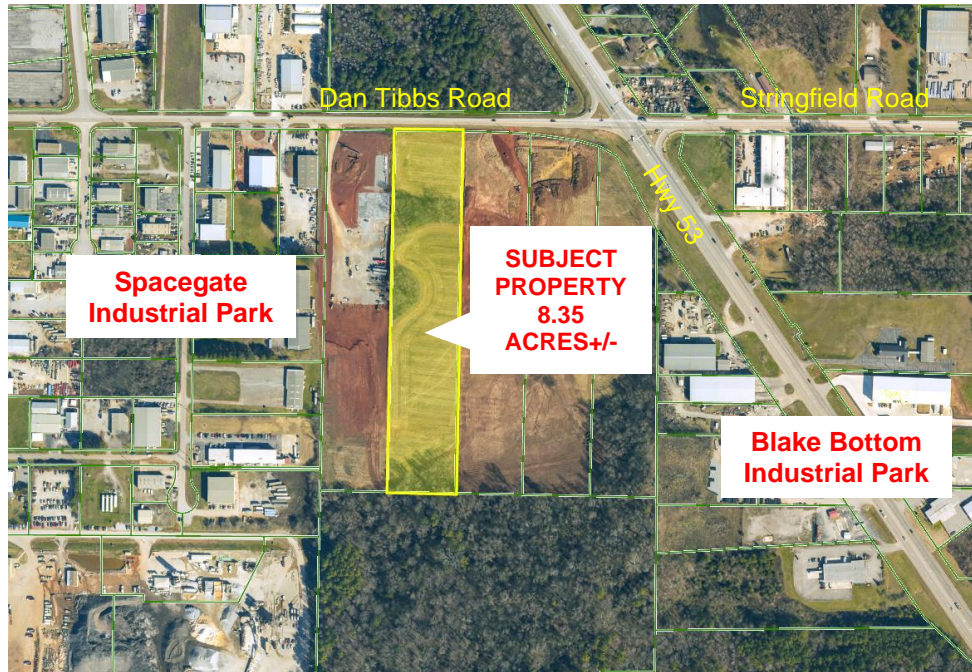




## DAN TIBBS ROAD LAND



**DESCRIPTION:** PRIME DEVELOPMENT LAND FOR INDUSTRIAL USE.  
**LOCATION:** SPACEGATE INDUSTRIAL PARK. NORTH ON JORDAN LANE/HWY. 53. LEFT ON DAN TIBBS ROAD. PROPERTY ON THE LEFT.  
**LAND SIZE:** 8.35 ACRES+/- 261' X 1,394' X 261' X 1,396'  
**ZONING:** COMMERCIAL INDUSTRIAL PARK DISTRICT AND **OPPORTUNITY ZONE**  
**TRAFFIC COUNT:** 20,960+/- VEHICLES PER DAY  
**SALE PRICE:** \$175,000/ACRE  
**CONTACT:** RUSS RUSSELL, CCIM, ALC, CEA ♦ 256-536-7777

**FOR OUR MOST UP TO DATE PROPERTY INFORMATION PLEASE VISIT  
[www.russrussell.com](http://www.russrussell.com).**

This property is subject to prior sale or removal from the market without notice. All information shown in this brochure, while based upon information supplied by the owners and from other sources deemed reliable, is not, in any way, warranted by Russ Russell Commercial Real Estate.



**Ranger Russell**  
Madison County's *First*  
Named Real Estate Drone



**Huntsville's First CCIM**



**Huntsville's First ALC**



**Huntsville's First CEA**



**Ruff Russell**  
America's *First and ONLY*  
Real Estate Mascot

923-C Merchants Walk • Huntsville, AL 35801 • (256) 536-7777

Fax: (256) 536-7710 • Website: [russrussell.com](http://russrussell.com)