



COMMERCIAL REAL ESTATE

PURCHASE PRICE:

\$595,000.00

Land Size: 2.70 Acres

Property Size: 16,240 Sq. Ft.

Year Built: 1974

16,240sf Manufacturing Facility Recently Painted Located In The Heart Of New Hope, AL With Offices, 2 Restrooms, A Full Kitchen, 200 & 400 Amp Service, Roll-Up Door And Loading Dock. A Recent Addition To The Building Houses More Production Space A Washroom And Extensive Storage Capacity. All Sitting On 2.7 Acres With Room For Expansion.

A photograph of a large, long, single-story industrial building with vertical corrugated metal siding. The building has a white roll-up door. It is situated on a gravel lot with some sparse vegetation. The sky is clear and blue. A yellow triangle graphic is in the top left corner of the photo.

WAREHOUSE/ MANUFACTURING FACILITY

Contact:

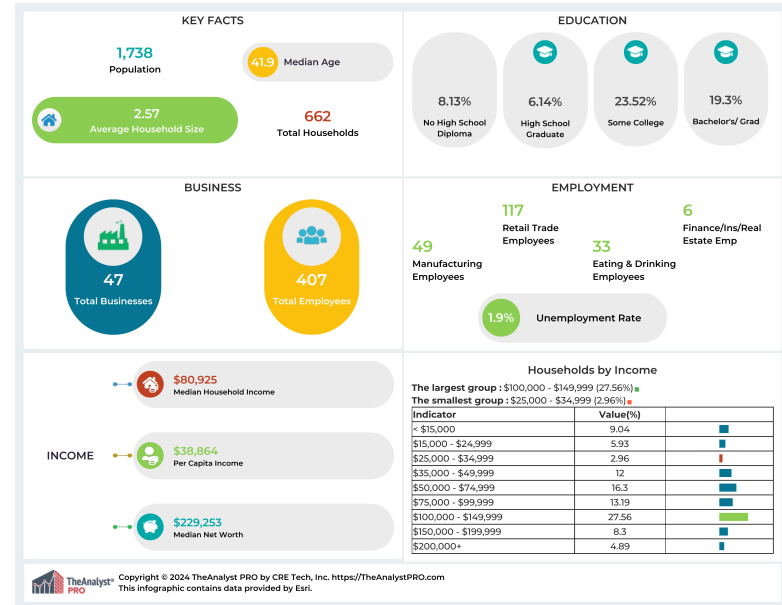
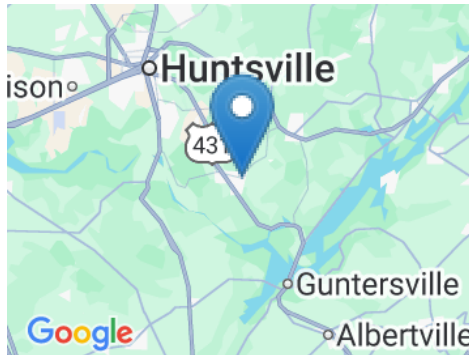
RUSS RUSSELL
CCIM

256-527-7777

1453 Johnson Avenue
New Hope, Alabama 35760

russ@russrussell.com

PROPERTY FOR SALE



This information has been obtained from sources believed reliable. We have not verified it and make no guarantee, warranty or representation about it. Any projections, opinions, assumptions or estimates used are for example only and do not represent the current or future performance of the property. You and your advisors should conduct a careful, independent investigation of the property to determine to your satisfaction the suitability of the property for your needs. Photos herein are the property of their respective owners and use of these images without the express written consent of the owner is prohibited.

Contact:
RUSS RUSSELL
CCIM
256-527-7777