



COMMERCIAL REAL ESTATE

1435 PARAMOUNT DRIVE FOR SALE



DESCRIPTION: MULTI-PURPOSE COMMERCIAL BUILDING FOR A VARIETY OF LARGE BUSINESSES WITH OFFICES, SHOWROOM, OR EVENT CENTER & WAREHOUSE.

LOCATION: WEST ON UNIVERSITY DR. 1.8 MILES PAST RESEARCH PARK BLVD. RIGHT ON PARAMOUNT DRIVE. PROPERTY ON THE LEFT.

VIRTUAL TOUR: https://youtu.be/PB_PEsXpbAg

BUILDING SIZE: 32,933 SQ. FT.+/-

FLOOR PLAN: ON REVERSE SIDE

LAND SIZE: 2.55 ACRES+/-

PARKING SPACES: 90+

ZONING: C-4, HUB, OPPORTUNITY ZONE

SALE PRICE: \$3,750,000

CONTACT: **RUSS RUSSELL, CCIM, ALC, CEA ♦ 256-536-7777**

FOR OUR MOST UP TO DATE PROPERTY INFORMATION PLEASE VISIT
RUSSRUSSELL.COM

This property is subject to prior sale or removal from the market without notice. All information shown in this brochure, while based upon information supplied by the owners and from other sources deemed reliable, is not, in any way, warranted by Russ Russell Commercial Real Estate.



Ranger Russell
Madison County's *First*
Named Real Estate Drone



Huntsville's First CCIM



Huntsville's First ALC



Huntsville's First CEA



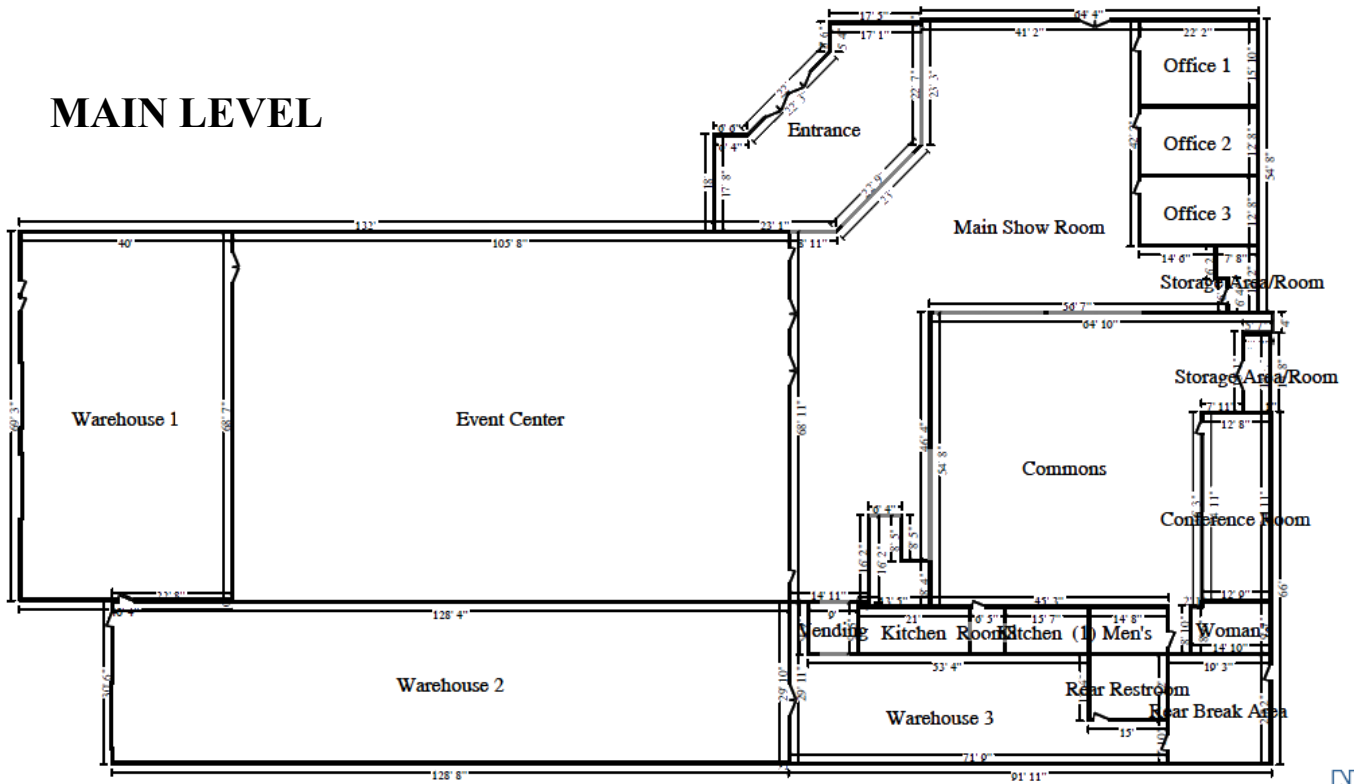
Ruff Russell
America's *First and ONLY*
Real Estate Mascot

923-C Merchants Walk • Huntsville, AL 35801 • (256) 536-7777

Fax: (256) 536-7710 • Website: russrussell.com

1435 Paramount Drive Building Layout

MAIN LEVEL



SECOND LEVEL

