



COMMERCIAL REAL ESTATE

16.91 acres for sale on Epworth Drive in Huntsville facing Hwy 72 E/I-565 and high visibility with a traffic Count of 64,467 vehicles per day. Zoned C-1 Commercial and located near expanding NE Huntsville and Chase Industrial Park, downtown Huntsville and just 10 minutes to Research Park, this part of Huntsville is seeing a growth explosion in retail and residential properties and the potential for continued growth is unlimited in this part of Huntsville. Don't miss out on this opportunity.

16.91 ACRES FOR SALE

**Epworth Drive  
Huntsville, Alabama 35811**



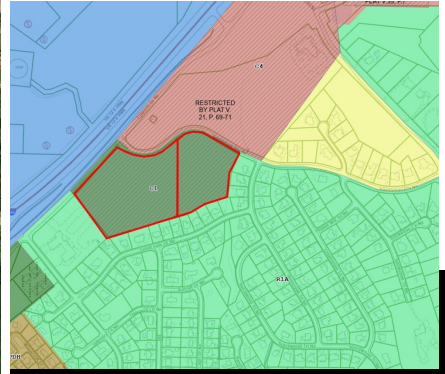
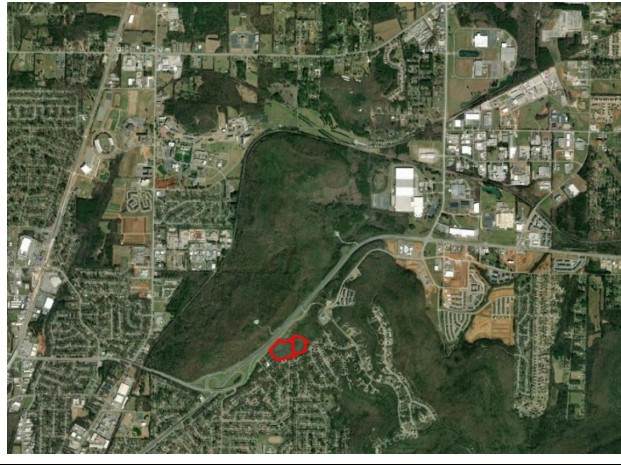
**SALE**

**PURCHASE PRICE:  
\$650,000.00**

*Land Size: 16.91 Acres*

Contact:  
**256-527-7777**

**RUSS RUSSELL**  
CCIM  
russ@russrussell.com



# Property Available

## 256-527-7777

### KEY FACTS

- 98,187 Population
- 38.8 Median Age
- 2.25 Average Household Size
- 39,191 Total Households

### EDUCATION

- 7.35% No High School Diploma
- 14.77% High School Graduate
- 19.76% Some College
- 24.75% Bachelors/ Grad

### BUSINESS

- 5,408 Total Businesses
- 65,048 Total Employees

### EMPLOYMENT

- 4,095 Manufacturing Employees
- 12,980 Retail Trade Employees
- 4,862 Eating & Drinking Employees
- 3,953 Finance/Ins/Real Estate Emp
- 5.4% Unemployment Rate

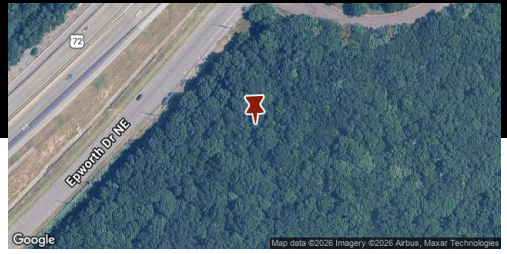
### INCOME

- \$63,999 Median Household Income
- \$39,840 Per Capita Income
- \$149,891 Median Net Worth

### Households by Income

The largest group : \$100,000 - \$149,999 (17.16%)  
 The smallest group : \$150,000 - \$199,999 (5.95%)

Indicator	Value(%)
< \$15,000	12.88
\$15,000 - \$24,999	8.15
\$25,000 - \$34,999	7.46
\$35,000 - \$49,999	10.85
\$50,000 - \$74,999	16.5
\$75,000 - \$99,999	11.37
\$100,000 - \$149,999	17.16
\$150,000 - \$199,999	5.95
\$200,000+	9.68



This information has been obtained from sources believed reliable. We have not verified it and make no guarantee, warranty or representation about it. Any projections, opinions, assumptions or estimates used are for example only and do not represent the current or future performance of the property. You and your advisors should conduct a careful, independent investigation of the property to determine to your satisfaction the suitability of the property for your needs. Photos herein are the property of their respective owners and use of these images without the express written consent of the owner is prohibited.