



COMMERCIAL REAL ESTATE

Discover an exceptional opportunity to own a Multi-Purpose Commercial/Retail building in South Huntsville. This highly visible location is perfect for businesses seeking to maximize their exposure and accessibility. The property spans a generous 6,776 square feet, offering ample space for a variety of commercial uses.

Step inside, you are greeted by a welcoming lobby, designed to provide your customers with a comfortable and professional environment. The building features an administrative office, providing a private space for your management needs and a 4,000sf warehouse area. The property is protected by a chain link fence and has ample parking for customers. Contact Agent Randy Lewis for more information at 256-694-1142.

COMMERCIAL/ RETAIL
BLDG.

**11590 S. Memorial Parkway
Huntsville, Alabama 35803**



SALE

PURCHASE PRICE:
\$879,000.00

*Land Size: 0.43 Acres
Property Size: 6,776 Sq. Ft.
Year Built: 1980*

Contact:
256-527-7777

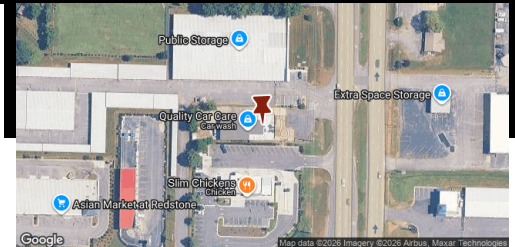
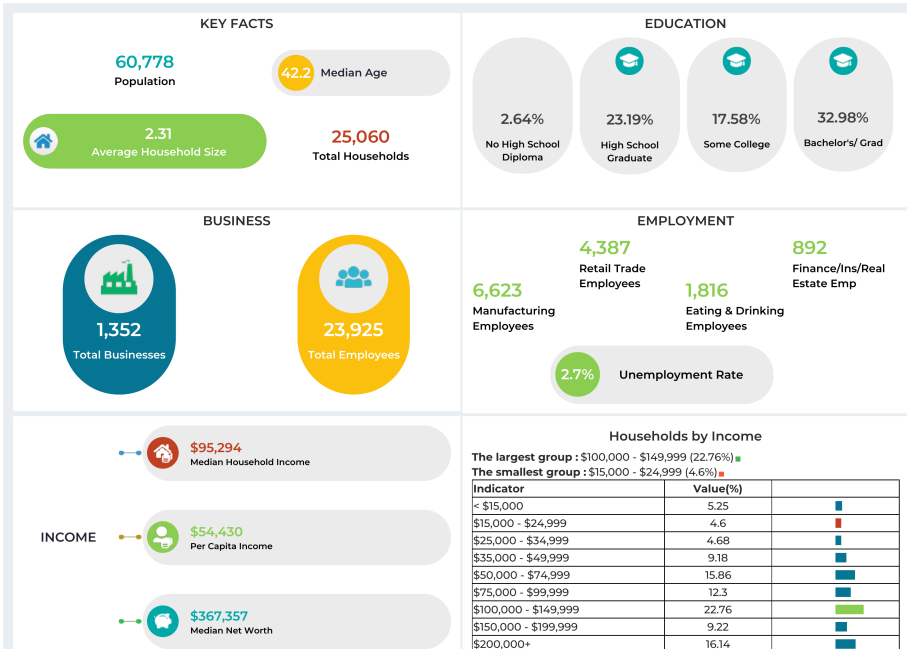
**RUSS RUSSELL
CCIM**

russ@russrussell.com



Property Available

256-527-7777



COMMERCIAL REAL ESTATE



This information has been obtained from sources believed reliable. We have not verified it and make no guarantee, warranty or representation about it. Any projections, opinions, assumptions or estimates used are for example only and do not represent the current or future performance of the property. You and your advisors should conduct a careful, independent investigation of the property to determine to your satisfaction the suitability of the property for your needs. Photos herein are the property of their respective owners and use of these images without the express written consent of the owner is prohibited.