



HAMPTON COVE LAND



DESCRIPTION: VERY UNIQUE DEVELOPMENT LAND BORDERING HAMPTON COVE AND ROBERT TRENT JONES GOLF COURSE WITH 220' ROAD FRONTAGE AND NEXT TO THE PROPOSED 53 HOME-SITE SQUARE AT BIG COVE SUBDIVISION. CALL FOR DETAILS.

LOCATION: JUST OFF HWY. 431 S. AND BEHIND PUBLIX IN HAMPTON COVE.

LAND SIZE: 13.24 ACRES +/-

PLAT: ON REVERSE SIDE

ZONING: COUNTY

SALE PRICE: \$1,395,000

CONTACT: RUSS RUSSELL, CCIM, ALC, CEA ♦ 256-536-7777

FOR OUR MOST UP TO DATE PROPERTY INFORMATION PLEASE VISIT
RUSSRUSSELL.COM.

This property is subject to prior sale or removal from the market without notice. All information shown in this brochure, while based upon information supplied by the owners and from other sources deemed reliable, is not, in any way, warranted by Russ Russell Commercial Real Estate.



Ranger Russell
Madison County's *First*
Named Real Estate Drone



Huntsville's *First* CCIM



Huntsville's *First* ALC



Huntsville's *First* CEA

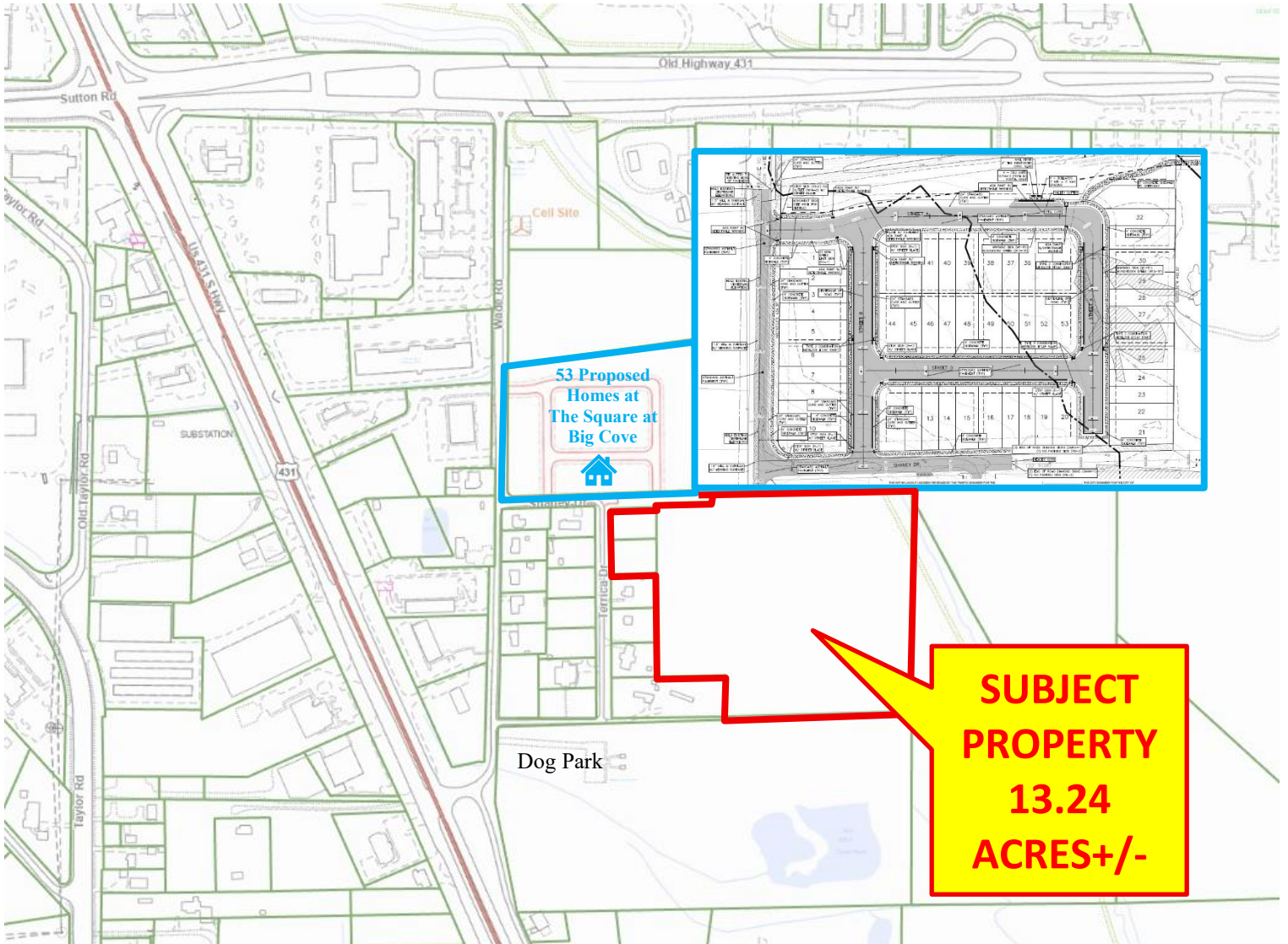


Ruff Russell
America's *First and ONLY*
Real Estate Mascot

923-C Merchants Walk • Huntsville, AL 35801 • (256) 536-7777

Fax: (256) 536-7710 • Website: russrussell.com

WADE ROAD LAND



53 Proposed
Homes at
The Square at
Big Cove



**SUBJECT
PROPERTY
13.24
ACRES+/-**